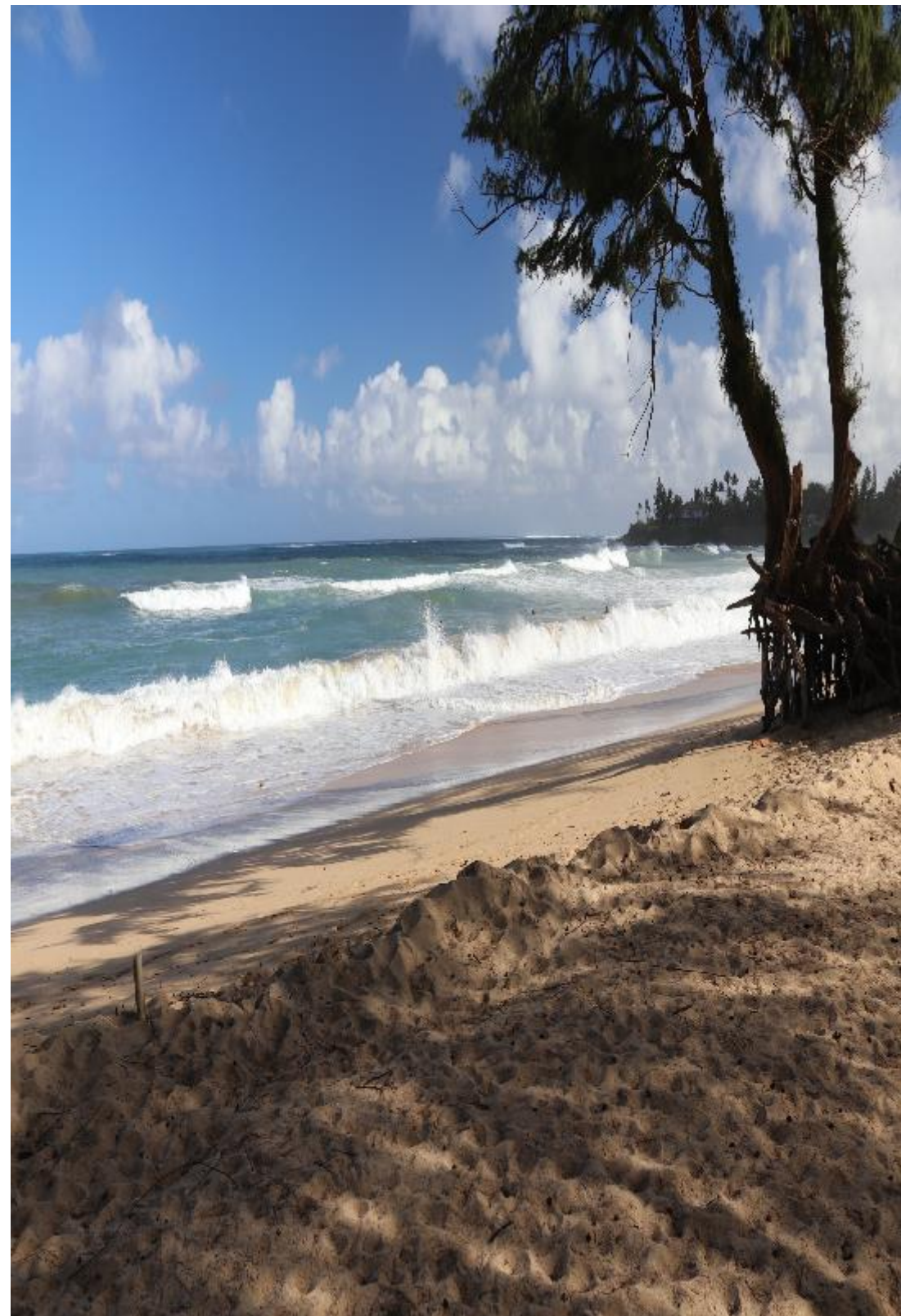


NEW CHALLENGES – NEW OPPORTUNITIES



# Reshaping the Maui County Parks Department

Karla H. Peters, Director  
David Yamashita, Planner VI

County of Maui  
Department of Parks and Recreation

Hawaii Congress of Planning Officials – September 2019

**22** COMMUNITY CENTERS

**130** PLAYING FIELDS

**53**  
TENNIS  
COURTS

**3**

CAMPSITES

**2,547**

ACRES OF DEVELOPED  
PARKLAND

**16** PLAYGROUNDS

**24**

BEACH  
PARKS

**9**

gyms

**5**

skate parks

**31** OUTDOOR  
COURTS



# CHALLENGES & OPPORTUNITIES



## SEA LEVEL RISE

- Affects many beach parks
- Vulnerability assessment



## INCREASING ACREAGE

- 585 acres to be added
- Insufficient staffing



## REFRAMING THE ROLE OF PARKS

- Part of infrastructure
- Improving public health



## ENGAGING THE COMMUNITY

- Involve people in decision making
- Provide information through variety of platforms

NEW INITIATIVES & APPROACHES

# System-Wide Projects





# Strategic Plan

## ADDRESSING INTERNAL AND ORGANIZATIONAL ISSUES

- Focus on six pillars
- Addresses all divisions in the department
- Staff involvement

# System Plan

## CREATING A DIRECTION FOR THE DEPARTMENT

- Foundation for development and renovation of parks and facilities
- Working document that can be updated
- Simple in format and structure

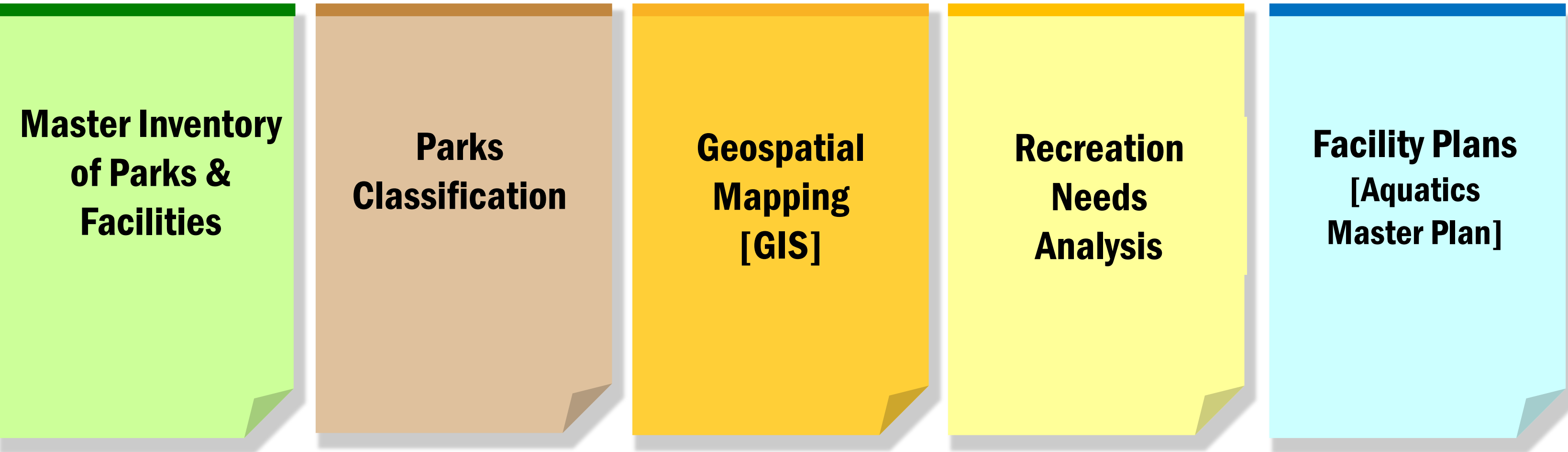
***If you don't know  
where you want to go,  
then it doesn't matter  
which path you take.***

Alice in Wonderland



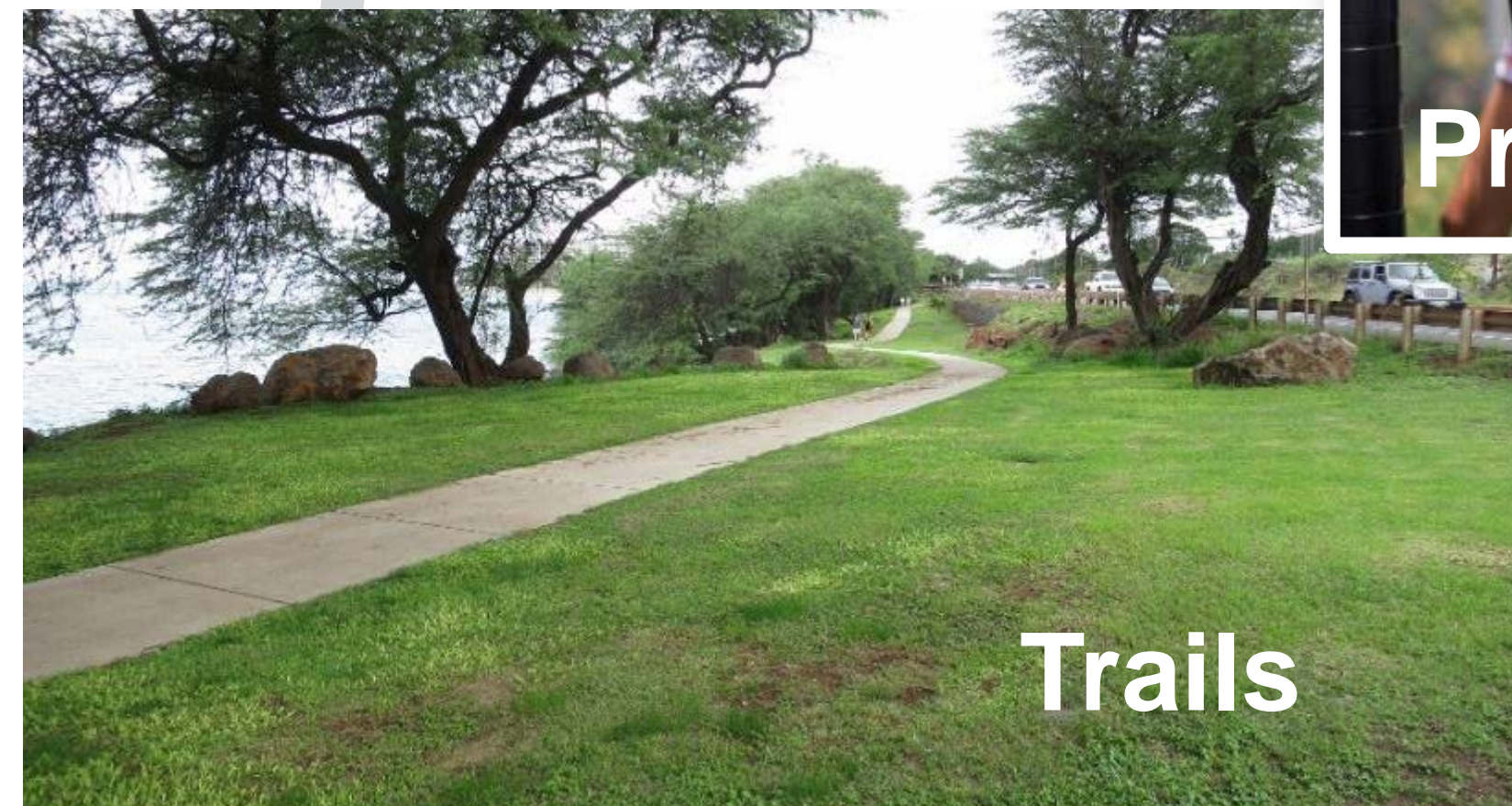
# System Plan

Vision for the County of Maui





# What does the DPR system consist of?





# Master Plans

## CREATING A DIRECTION FOR SPECIFIC PARKS

- Consistent planning process
- Standard template for Requests for Proposals
- Extensive community engagement
- DPR staff actively involved in project management and community engagement

**Wells Park Master Plan**

**Kanaha Beach Park Master Plan**

**South Maui Community Park Master  
Plan Update**

**Baldwin Beach Park Master Plan**

**Kahului Community Park Master Plan**

**Hookipa Beach Park Master Plan**

**Launiupoko Master Plan**

**Lahaina Civic Center Master Plan**

**Hana Civic Center Master Plan**

2020

2021

2022

Mar - Apr      May - Sept      Oct - Mar      Apr - June      July - Oct      Nov - Mar



Interviews  
PAC

Technical Studies

- Site Analysis
- Utilities
- Soils & Geology
- Cultural Assessment
- Drainage & Stormwater
- Coastal Analysis
- Wildfire Vulnerability
- Other Studies As Needed

Master Plan Goals

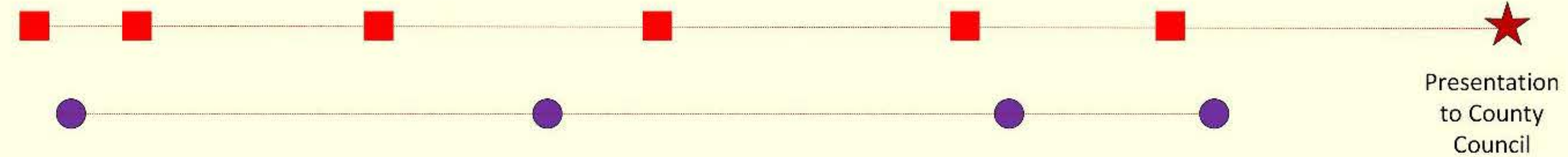
2-3 Concept Options

Cost Estimates

Community Engagement

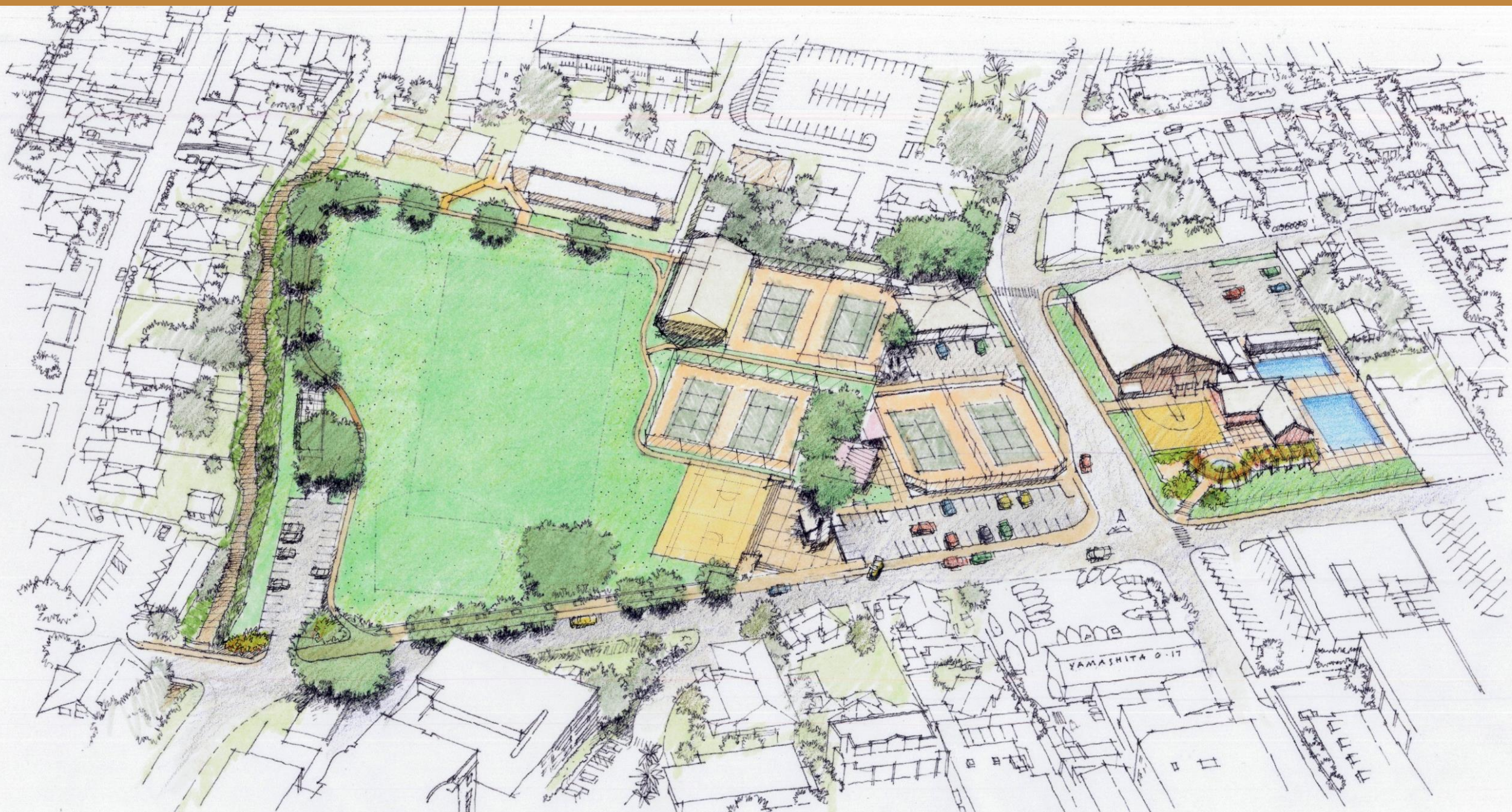
Advisory Committee Meetings

Open Houses





# Wells Park Master Plan





# Community Engagement

INVITING THE COMMUNITY TO BE PART OF THE DECISION MAKING

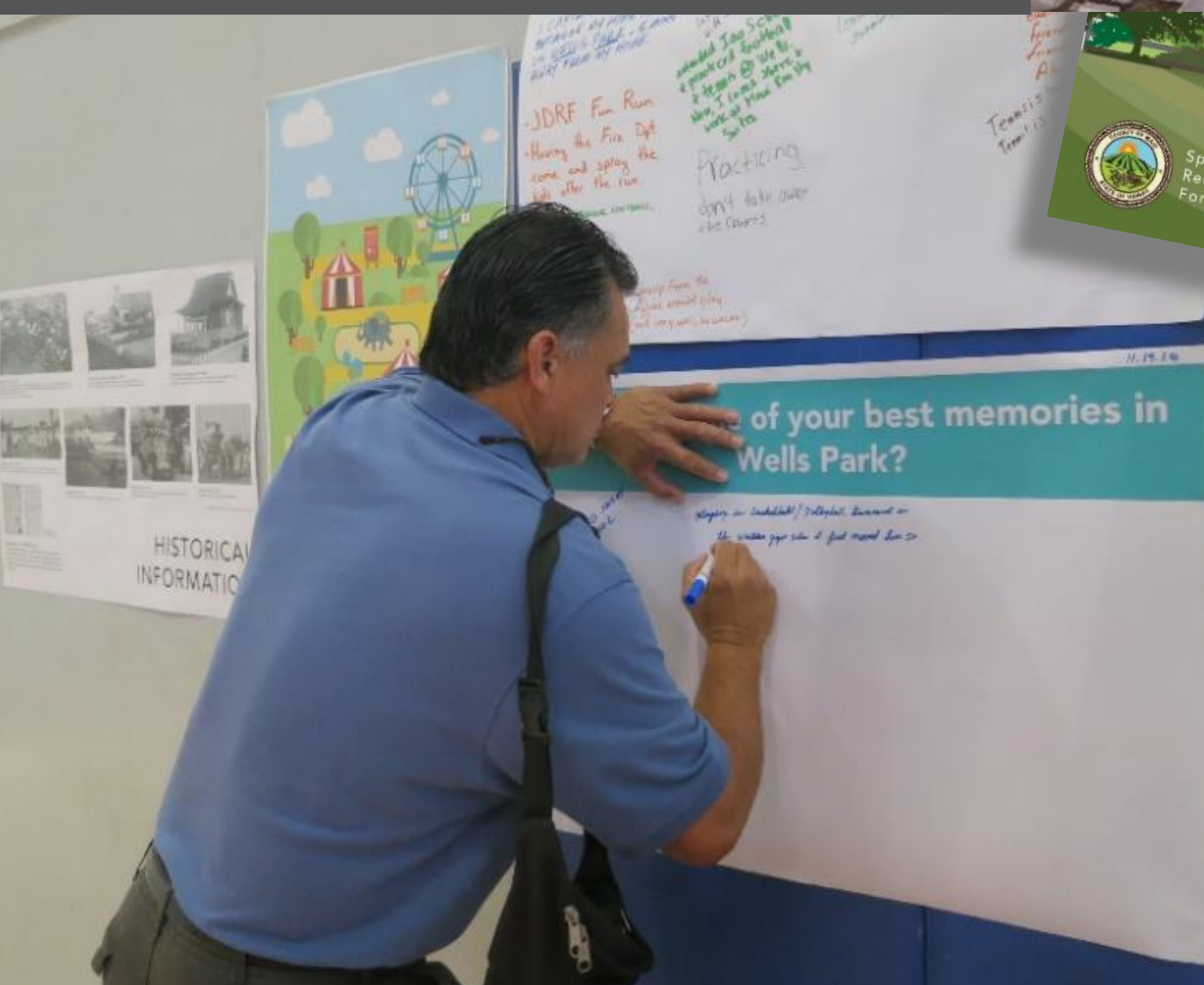
- Integrated throughout the planning process
- Variety of activities and events
- Information and updates on the county website





Interviews

Advisory Committee



Open Houses





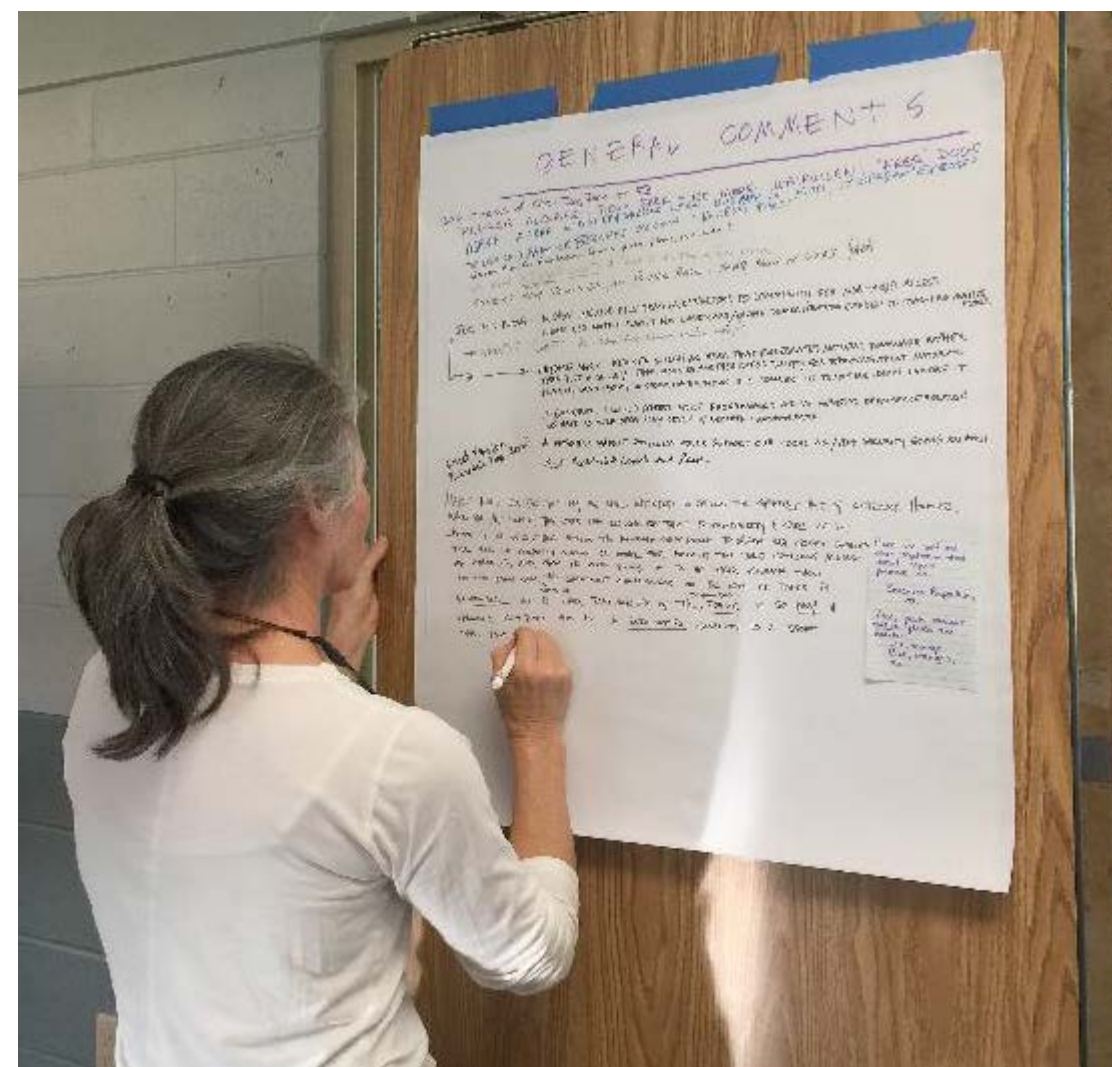


# Interviews & Advisory Committee

IT'S ABOUT LISTENING

- 10-12 interviews
- 4-5 Advisory Committee meetings
- 6-12 people in the committee





# Open Houses

## AN ALTERNATIVE TO PUBLIC MEETINGS

- Interactive
- Educational
- Accessible and convenient
- Informal and welcoming



# Tell us what you think about the options.

Which option do you prefer? What changes would you make to the options? Is there anything that you particularly like or disagree with?

1

Please consider the building a new baseball field for our community. It's desperately needed.  
Thank you

For several years I have been asking for a new baseball field in Kihikihi. I want to be able to attend the open house. We need this field!

Aloha,  
Please let this email serve as the support of a full size baseball field in Kihikihi. My wife and I are the owners of a house in Kihikihi and as such, Kihikihi has a superior program in many ways. Adding a new field would further improve the town's image, as well as the organized activities.

Unfortunately, I am unable to attend the February 21st open house but please accept this email of support in my stead. Thank you for your consideration.

Aloha,

Thank you for your consideration. We need baseball facilities in Kihikihi. Kihikihi park is not sufficient and crowded with mixed usage from sports and also the general community. One vote for the baseball field concept. Thank you...

Aloha,

Please keep the full size baseball field in the county's plan! We truly need this field!

Mahalo,  
With warmest aloha,  
Jessica Clark

Little people  
We have  
plenty of baseball  
parks including  
the new high school  
and field!

More  
Pickleball  
Please

As a long time board member, past President of Kihikihi Little League, and youth coach, I would strongly support Kihikihi getting a dedicated baseball field in the new portion of SMC. A field that both kids and adults can use is a must. Kihikihi is the largest of a district to not have a single dedicated full size baseball field. It would help take strain off of overused multi-purpose fields and provide a great venue to host games for various levels of play.

Thank you and I look forward to seeing these new fields in the future.

Mahalo,  
Steve Rappacher  
Kihikihi Resident

Baseball/Softball field  
Pickleball courts  
Tennis courts

Please include Pickleball Courts in any plans. Current number of courts in Kihikihi is very inadequate.

Youth Center - Boys & Girls Clubs of Hawaii  
This park is ideal - close to schools, the gym, ball fields...

Concept #1  
Add a dog park to the multi-use open space.

Move the pickleball courts away from the house.

Move the outdoor amphitheater away from the house at the ballfields.

We have 200 kids involved in baseball, ages 4-14.  
There's hardly no good option for a full size field in Kihikihi which is holding our kids back & is a disadvantage.  
The demand is there, it's up to us to get it completed.

My additional comments are to make the park a more well thought out area & to make sure it is a multi-use area. To this point, my only concern is the lighting. Will there be lights? No Pickleball Concept. How about the field to be used for multi-purpose sports? At "soccer", "baseball"?

Good Concept 1  
Access point for vehicles is important for surveillance.

When a person is going to go through from Kihikihi to Waikele, it's a good idea to have a recycling center going to go to the recycling center. I like the field away from the house.

THIS OPTION IS BEST!  
A FULL-SIZED BASEBALL FIELD IS BADLY NEEDED.  
THE BASEBALL FIELD AT KIHIKIHI PARK DOESN'T HAVE AN OUTFIELD FOR EYES.  
THE SUN IS IN BATTERS' EYES.  
MIKE FALEY

I would like to see a lot of pickleball courts.  
I like concept #1

Concept 1  
We need an actual baseball field for South Maui!  
Add a dog park and it will be perfect!

2

I like plan #2 the best. Kihikihi needs a full sized sports field/soccer field! It benefits multiple sports and organizations that are growing in South Maui. For example, Kihikihi Soccer Academy, Rugby team I see parking at Kihikihi Park, Kihikihi Dolphins swimmer club, ultimate frisbee club I see playing Kihikihi Park at night, and the Kihikihi Mahi-mahi group games that have been going on for over a decade. Kihikihi needs a big, nice field. I also like the area for community events like markets, yoga in Park, etc. This plan includes this area as well!

#2 is the best for ALL  
No Dog park -- is this plan for people or animals?

I like #2 with 'community events' area, rock climbing, some skate features rather than a large dog run area.

MIKE FALEY  
Kihikihi Resident

#2 is the best. We need more multi-use parks.

Thank you for the opportunity to see the proposed multi-use park. I like the idea of a multi-use park. I like the idea of a multi-use park. I like the idea of a multi-use park.

Why is there no full size regulation football field that could be used for multiple sports such as Rugby, Ultimate Frisbee, flag football and soccer? The field could be used for multiple purposes. It is not just a football field but it can be broken down into smaller fields for soccer and other sports. We need a multi-use field. We need a multi-use field. We need a multi-use field.

1. Why are we making new parks when we can't even take care of what we have? We have parks around Kihikihi that have nothing. (Example) Kihikihi Park play ground area built over 10 years ago. It's dry the kids all have nothing. When should we expect for these parks to be fixed?

Specifically to projects:

1. Request for all trees and foliage be removed and replanted if possible for Hawaiian cultural gathering and subsistence (Kihikihi, Kihikihi, Kihikihi, etc.) Also, more shade trees. In Kihikihi Open Space area many of the trees aren't looking like they're going to last. This is the last and one sports occur for our kids.

2. I see there's an arch site on this plan. I would like to see more protection for the site. Fencing off that entire side of the site with a wall or gate to protect the site. It could create an awesome Hawaiian experience for the future.

3. More like stations. If they're community events in public areas, more protection of community members helps with security of park.

Mahalo for your time and attention to these concerns.

I am a proponent of Concept 2. I like the idea of a multi-use park. I like the idea of a multi-use park. I like the idea of a multi-use park.

3

Dog Park needed for owners to allow dogs to run & play w/out annoying other residents + tourists (aka Waipuhia Park). Necessary for the safety & welfare of our animals & community. Join Friends of Kihikihi Dog Park on FB to support this plan! J-S West

No Dogs in Waipuhia Park

YES TO DOG PARK!!!

YES TO #3 MAKES USE OF MOST OF THE SPACE  
PROVIDES DOG RUN - OBVIOUSLY NEEDED.  
WOULD BE NICE TO HAVE 12 PICKLEBALL COURTS.

Dog park here needed. Like to keep multiple uses for community + more pickle ball courts in any scenario. Dog park + (community events) space plz soccer field preferred over more baseball.

#3  
We already have more than enough fields. We need more community fields. We need more community fields. We need more community fields.

Separate Pickleball and Tennis. The new (pickleball) maybe more to be. We need more to be. We need more to be. We need more to be.

To: Mr. David Yamashita and Team  
County of Maui, Department of Parks and Recreation

Aloha,

Thank you for the opportunity to contribute comments on Phase 2 of South Maui Community Park. Our family hardly ate that the concept selected be the one that includes full size soccer and baseball field.

Our perspective as South Maui community members, parents and volunteer coaches (MPS) (American Youth Soccer Organization) and Kihikihi Little League.

We have lived in Kihikihi for about 11 years. It was here that we started our family, and we were so grateful when the first phase of South Maui Community Park opened back in 2013. 11 years we brought our children to the playground, appreciative to have such a nice, new place to bring our kids and get together with other families.

As the years passed, our most frequent visits, however, quickly became for youth soccer. We have since spent literally hundreds of hours playing soccer at South Maui Community Park, both organized and just for fun with other South Maui families.

As our young athletes grow - like our community - so do their needs.

If the County's goal is to invest in South Maui's future, then building a full-size soccer field makes sense.

Soccer continues to grow in popularity in our country with every generation. Youth soccer participation today is more than twice that of Little League, and a million more kids play soccer than do baseball (Small Business Journal). Around 12- to 17-year-olds - the age of South Maui youth that would utilize a full-size soccer field - Major League Soccer is now more popular than Major League Baseball. In fact, the only sport more popular than soccer is basketball.

Many players begin competing on a full-size field as early as 10, and find the most success when they begin training soccer at an even younger age. There are parallel needs for developing youth baseball athletes, as well. Access to a full-size baseball field is crucial for youth ages 10 to 17 as they transition from Little League, to Pony, to Cal, and beyond.

Currently there is no full-size soccer field in South Maui, despite it being one of the fastest growing areas on the island. We're unaware of any other proposals for a public, full-sized soccer field in South Maui.



# Reframing What We Do

## CREATING A DIRECTION FOR THE DEPARTMENT

- Parks as part of county infrastructure, not an “enhancement”
- Contributes to improving public health
- More systematic in how services are provided and facilities are maintained

# Collecting & Using Information

## LOOKING BOTH INWARD AND OUTWARD

- Establishing a foundation based on credible information such as the 2015 survey
- Ongoing review of what other jurisdictions are doing
- Awareness of trends and new ideas



## SUMMARY REPORT

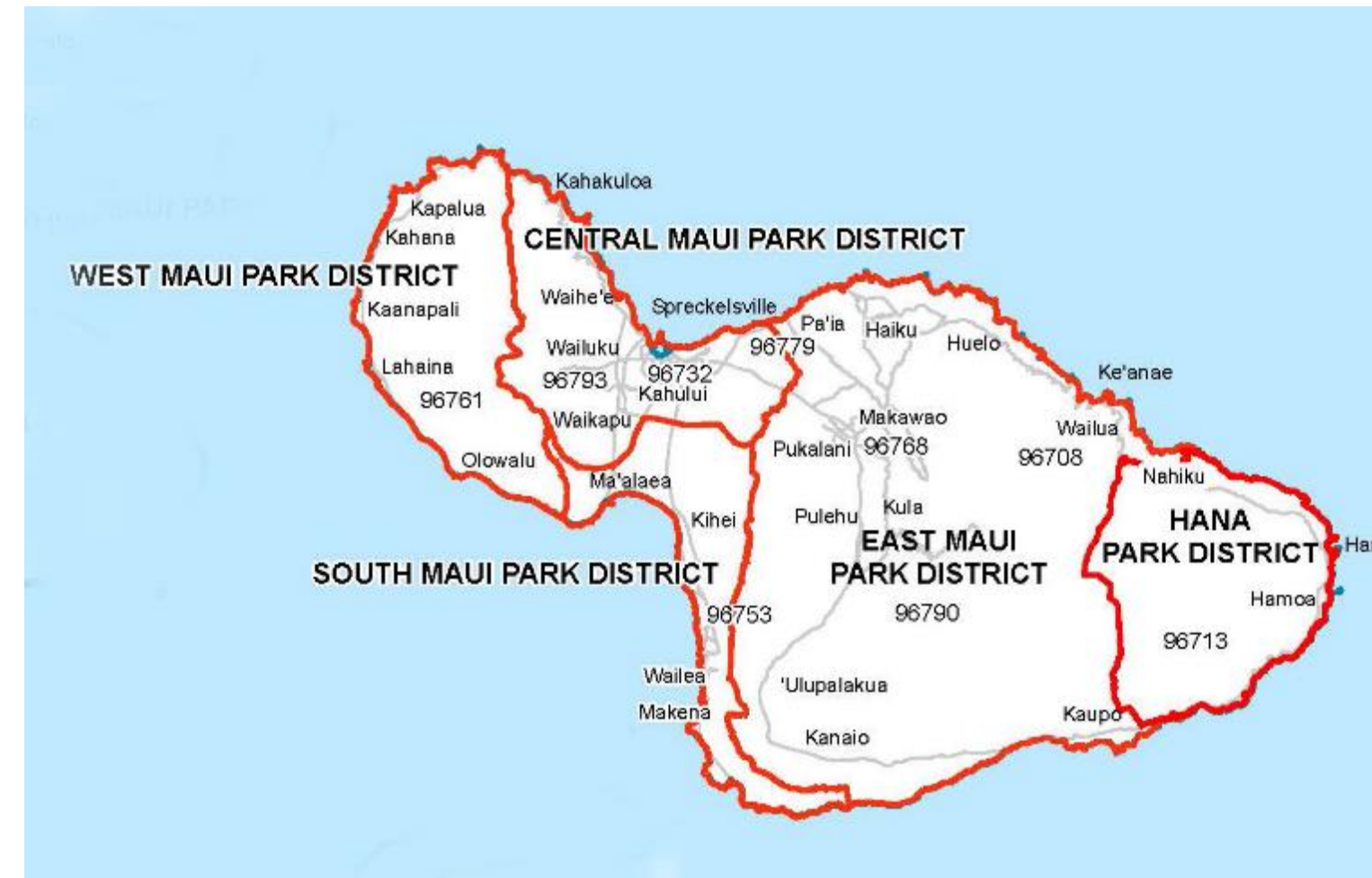
### **Recreation Needs and Preferences**

*A Snapshot of Key Survey Results*

County of Maui / Department of Parks and Recreation



March 2017

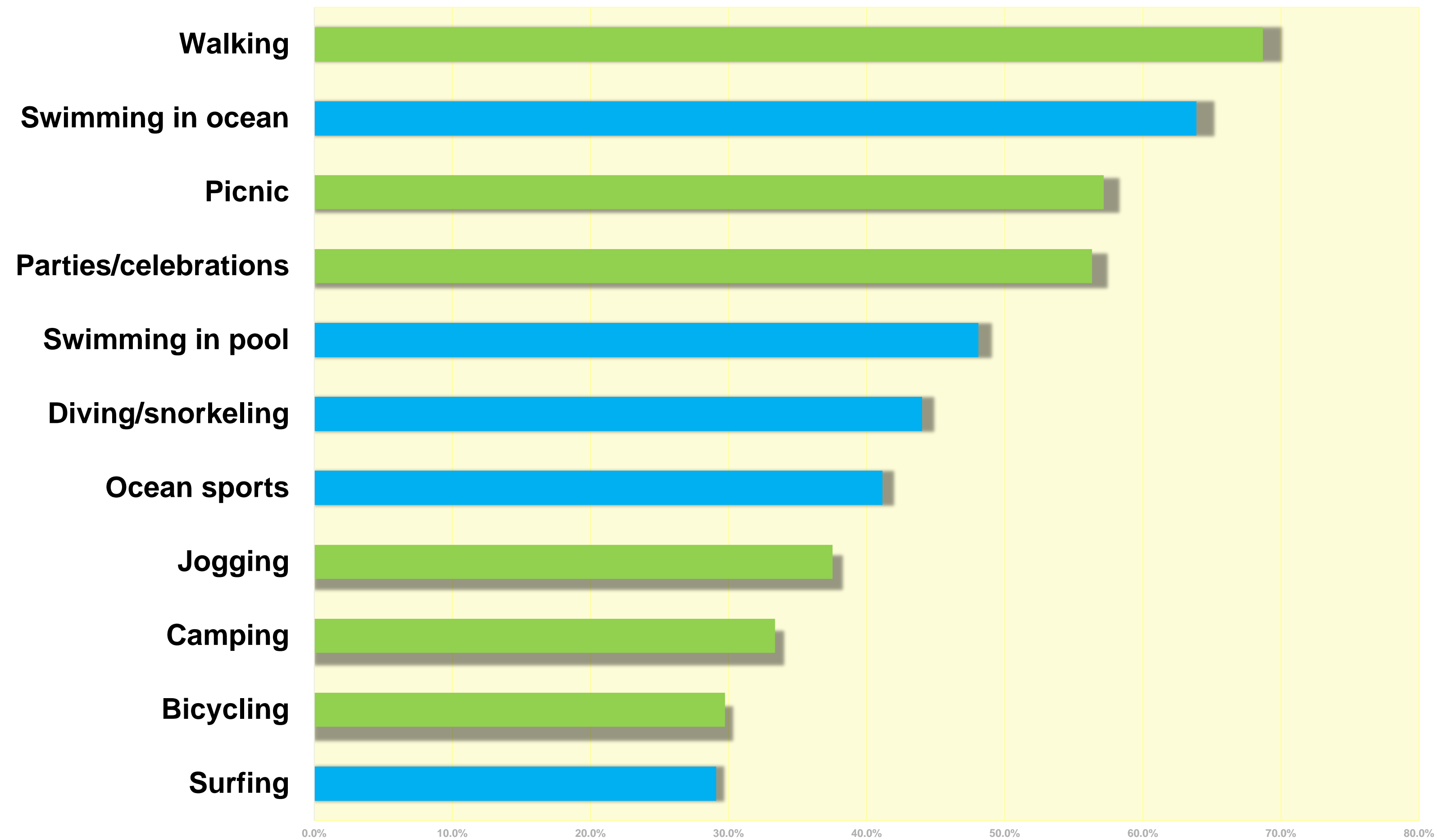


# 2015 Mail Survey

## QUANTITATIVE FOUNDATION FOR PLANNING

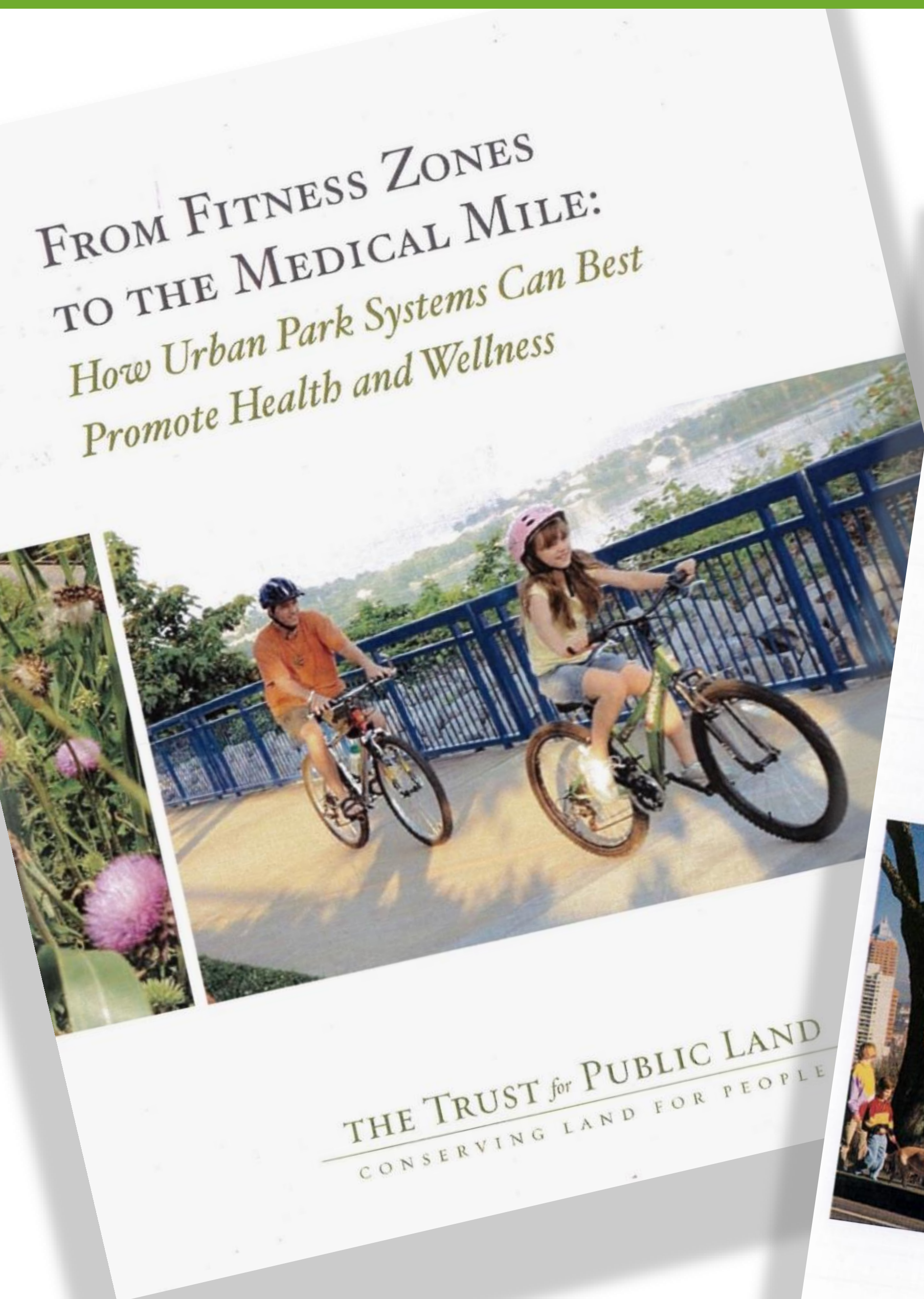
- Mail survey to 12,500 households
- Focus on how people use parks and where they go
- Results disaggregated into seven districts

# How Do People Like to Recreate?





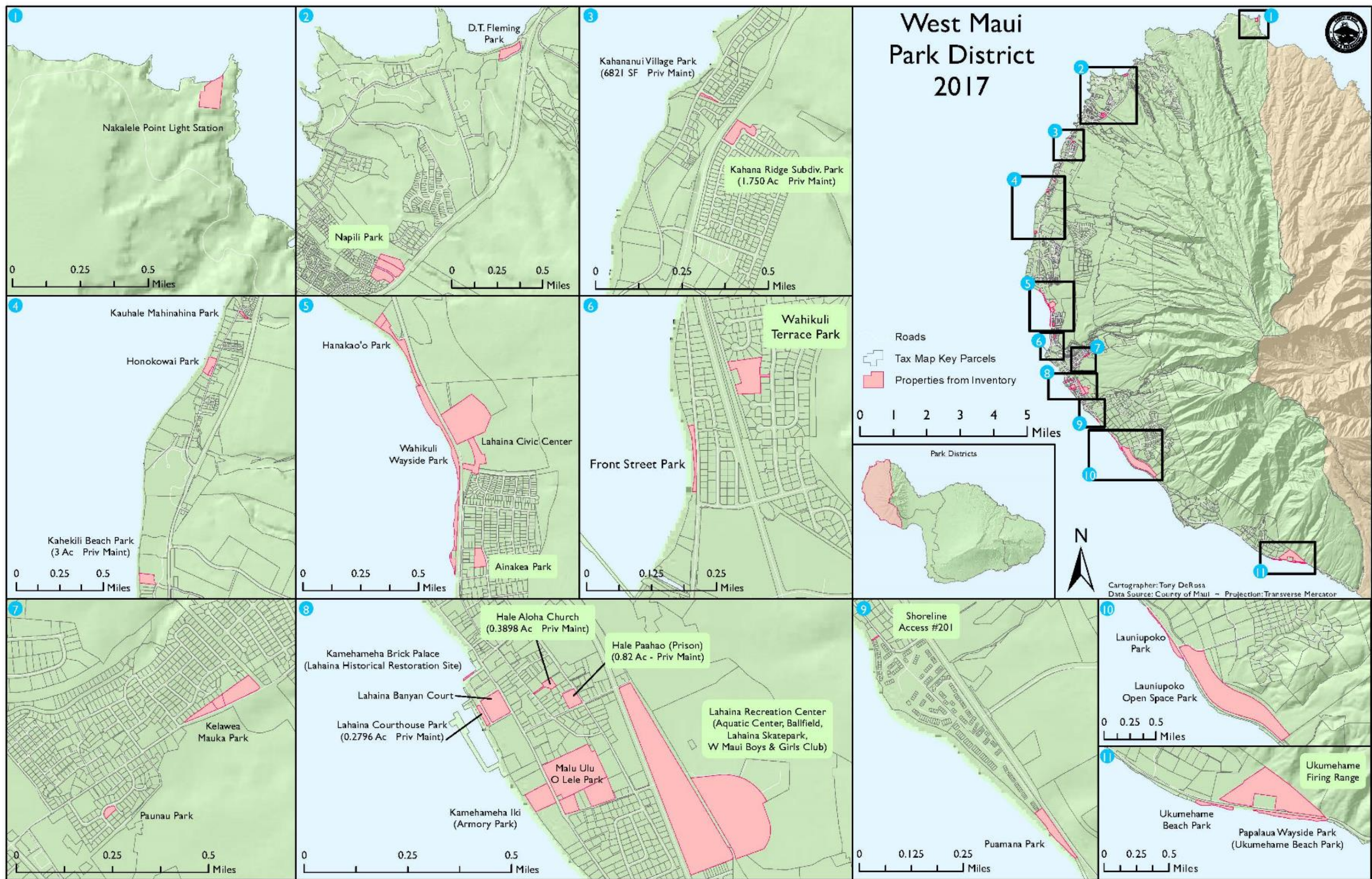
# Parks As a Way to Address Public Health



“...parks with walking loops had 80 percent more users compared to those without loops.”

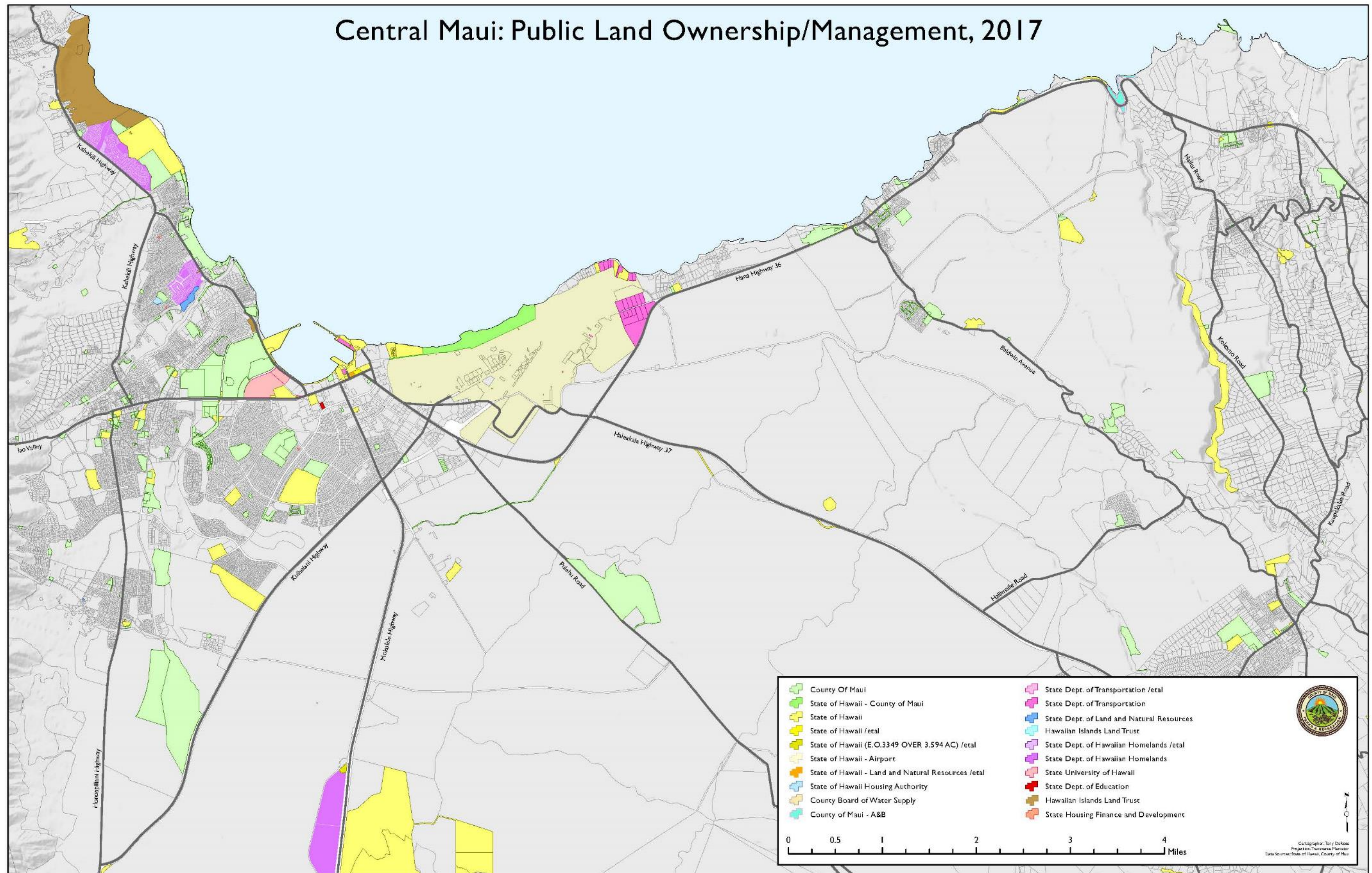
*Quantifying the Contribution of Public Parks to Physical Activity and Health, RAND Corporation, 2014*







# Central Maui: Public Land Ownership/Management, 2017





NEW INITIATIVES & APPROACHES

# Specific Projects





# Healthy Communities Initiative

## THE BIG IDEA

*The Healthy Communities Initiative (HCI) is a comprehensive strategy to redefine how neighborhoods and towns in Maui County are revitalized and developed. The strategy's primary goal is to create communities that are walkable, include a range of transportation options, provide a variety of affordable housing types, offer a network of connected parks and open spaces, and promote healthy activities.*





# Pesticide-Free Pilot Project

## MOVING BEYOND TRADITIONAL APPROACHES

- Beyond Pesticides donation
- Pilot sites
- Implementation of plan
- Challenges
- Moving forward



## Community Presentation



# RECOMMENDATIONS FOR THE AQUATICS FACILITIES Master Plan

The Department of Parks and Recreation and the consultant team will be presenting their recommendations to the community.

The master plan will include recommendations for new facilities, the renovations of existing pools, a description of projected costs for development, staffing, and maintenance.

Come and be a part of honoring the past with a plan for the future!

**JUNE 14  
at 6:30 PM**

**Waikapu Community Ctr.  
22 East Waiko Rd.**

For more information on the project, call 270-7386  
or email [brianne.savage@mauicounty.gov](mailto:brianne.savage@mauicounty.gov)



# Aquatics Facilities Master Plan

## CRITITCAL ASSESSMENT OF AQUATIC FACILITIES

- Foundation for planning and renovation
- Technical assessment of all facilities
- Options for future maintenance, renovation, and development





# Kaahumanu Ave. TOD Planning

## INTEGRATING PARKS INTO REGIONAL PLANNING

- Develop Kaahumanu Ave. as a multi-modal corridor between Kahului and Wailuku
- Provide stronger connections from corridor to adjacent parks.
- Parks staff part of team to secure funding for project





Wailuku

Kahului Harbor

Keopulani Park

MACC

Boys & Girls Club

Baldwin HS

Sakamoto Pool

UH Maui College

Emergency Housing Project

Hoaloha Park

Maui Mall

Kahului 2070

Wailuku Civic Complex

State Courthouse Expansion

Wells Park Renovation

Police Stn.

Kaahumanu Ave. TOD

Kaahumanu Mall

Maui Memorial Hospital

Kahului Park Redevelopment

Hale Mahaolu

Hale Mahaolu

HHFDC Hsg./Office

Transit Center

Catholic Charities Housing

Kane St. Complete Street

Kahului





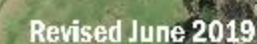
# Kahului 2070

## A NEW KIND OF COMMUNITY FOR THE 21<sup>ST</sup> CENTURY

- A total community built around walkability
- Designed to deal with SLR, flooding, & other threats
- A hub for the makai terminus of the TOD corridor



## CREATING A 21ST CENTURY COMMUNITY IN THE CENTER OF MAUI







# SLR Vulnerability Assessment

## DEALING WITH NEW THREATS

- Study of 50+ parks, mainly in south and west Maui
- Identify infrastructure at risk
- Informs future capital projects
- Identify areas where new acquisition may be needed



## Revised 18 July 2019

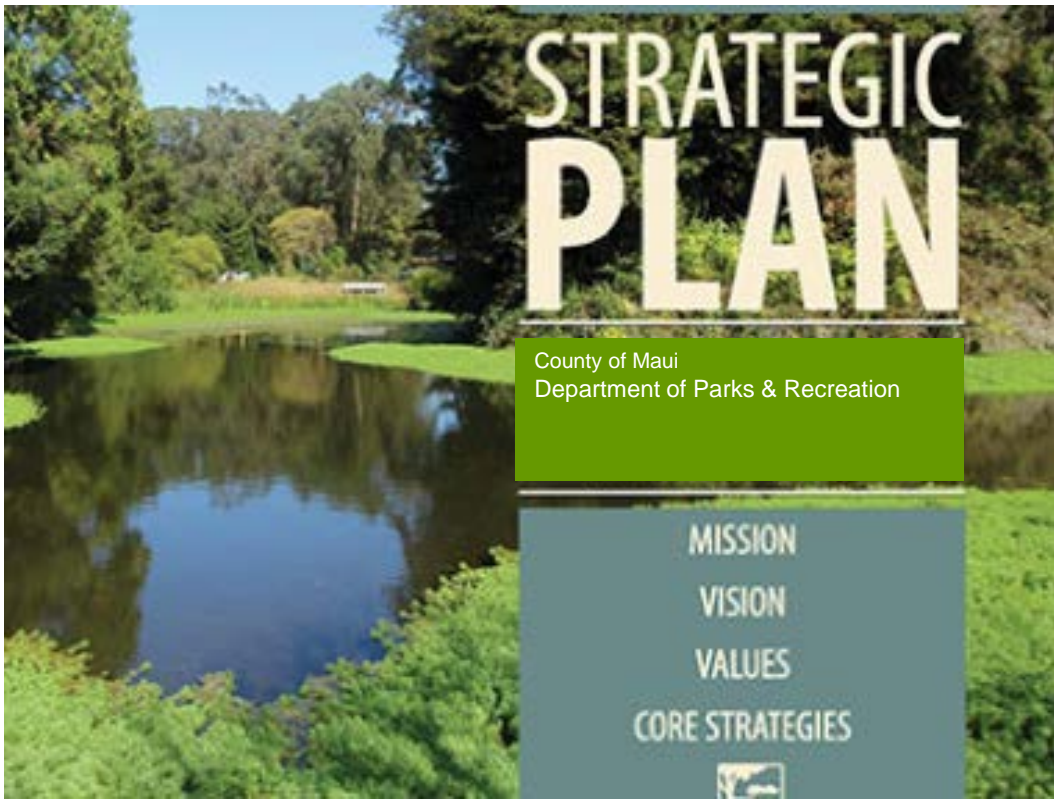


NEW INITIATIVES & APPROACHES

# Next Steps



# Next Steps



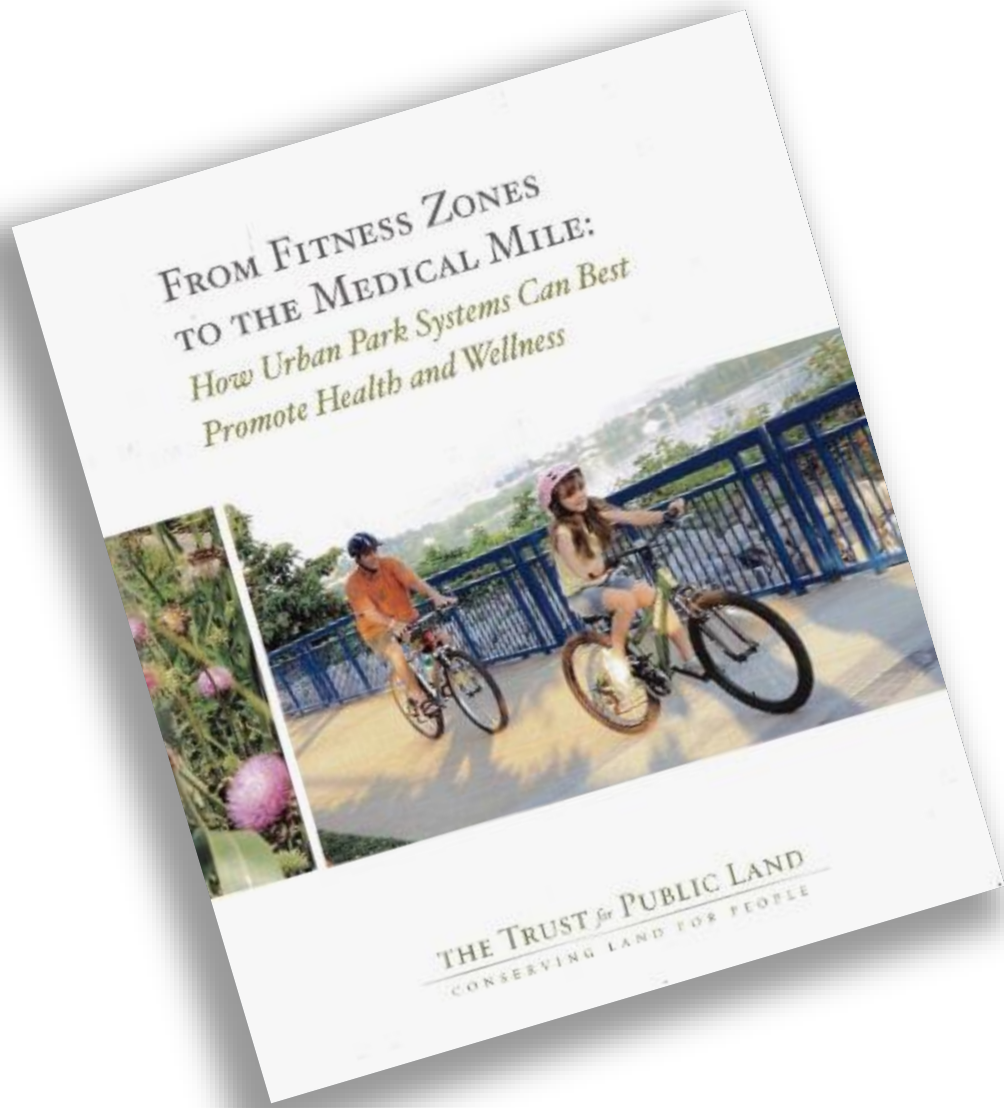
## ADDRESS INTERNAL ISSUES& STRUCTURE

Complete Strategic Plan



## CONTINUE SYSTEM PLANNING

Complete District Plans  
Address SLR & other environmental issues



## RAISE THE PROFILE OF THE DEPARTMENT

Reframe what we do  
Collaborate with other agencies on regional initiatives



## WORK ON EXTERNAL COMMUNICATION

Public engagement  
Communication about projects





**“The end is never the end. It's always the beginning of something.”**

Kate Lord Brown, *The Perfume*

*Garden*