



# Click to edit Master title style

Hawaii Division Office

Holet Sea Arch in Shadow

## **FEDERAL FUNDING FOR PEOPLE WALKING AND BIKING**

*2019 Hawaii Congress of Planning Officials*

*Maui*

*Amy Ford-Wagner, FHWA Hawaii Division*



U.S. Department of Transportation  
Federal Highway Administration

# Why Don't Pedestrian and Bike Projects Get Built in Hawaii?

Hawaii Division Office

Holet Sea Arch in Shadow

- “There’s no money.”
- “It’s too hard.”



# Money for Biking and Walking

Hawaii Division Office

Holet Sea Arch in Shadow

- “TA Set-Aside”
  - AKA TAP funds, AKA Transportation Enhancements
  - Amount is **set aside** from the larger “Surface Transportation Block Grant” program
  - \$3.77M per year, for Hawaii



# But Wait, There's More...

Hawaii Division Office

Holet Sea Arch in Shadow

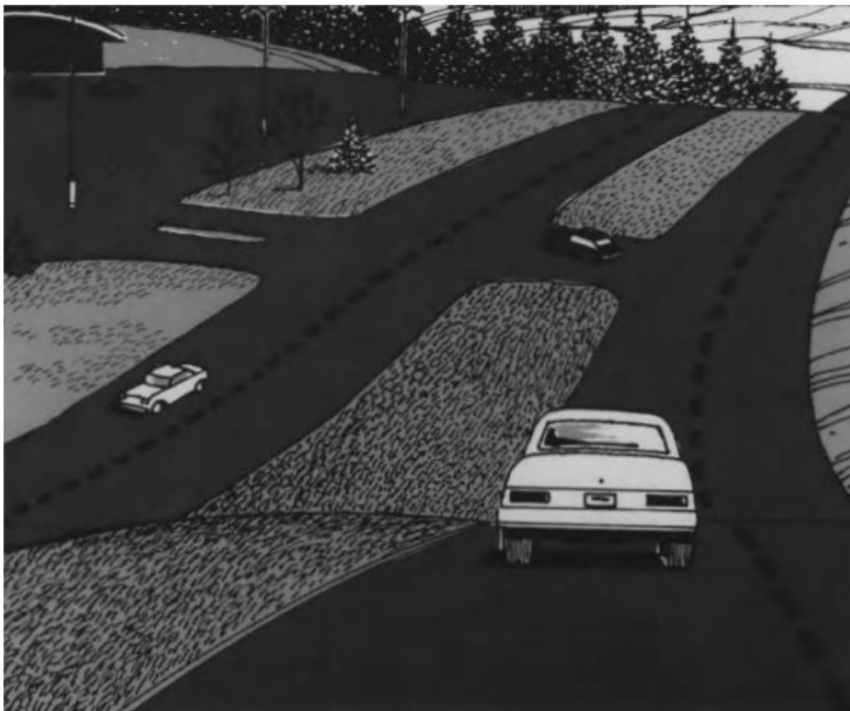
Fund	Annual \$\$	Bikes & Peds?	
		Planning	Design & Construction
TA Set-Aside	\$3.7M	😎	😎
STBG Surface Transportation Block Grant	\$46M	😎	😎
CMAQ Congestion Mitigation & Air Quality	\$11M	😎	😎
HSIP Highway Safety Improvement Program	\$10M		😎
MTP Metropolitan Planning	\$1.8M	😎	
SPR State Planning and Research	\$3.6M	😎	
NHPP National Highway Performance Program	\$92M		😎

# And Also...

Hawaii Division Office



A Guide To Federal-Aid  
Programs And Projects



Federal Highway Administration

Office of Stewardship, Oversight, and Management

<https://www.fhwa.dot.gov/federalaid/projects.pdf>

Federal Highway Administration

- Balances from previous years

TAP/TA Set-aside	\$9M
Safe Routes to School	\$3M
CMAQ	\$7M

# But If You Go For the Big Bucks...

Hawaii Division Office

Holet Sea Arch in Shadow

- *If you want to use funding other than TA Set-Aside,  
Your bike/ped project will compete for priority with other surface transportation projects...*
- And if your bicycle & pedestrian projects want to compete with bridge, pavement, system preservation, capacity projects, etc., for funds...



# Where Planning Shines...

Hawaii Division Office

Holei Sea Arch in Shadow

*You have to make the case!*

*And you have to know the process.*



# Generate Ideas & Conduct Analyses to Address Specific Goals (or meet requirements)

## Asset Management

Bridge  
Management  
System

Pavement  
Management  
System

## Sub-Area/Corridor Studies

Farrington  
Highway  
Study

Central  
Oahu  
Study

Kihei  
Area  
Study

West Side  
(Kauai)  
Shared-  
Use Path

Bus System Study

Pedestrian Master  
Plan

Bicycle Plan

Et Cetera

Safety Plans

Freight Plan

Climate Change/Resilience  
Studies

Transit Asset Management

Establish larger vision/goals, examine funding, make tradeoffs, prioritize

Mid/Long-Range Plans

Consider project/phase readiness to select a *program* of specific projects

STIP/TIPs\*

\**program NOT plan*

Smart TRAC

Congestion Management Process

# Basic Transportation Project Development Process & Timeline

Holet Sea Arch in Shadow

Hawaii Division Office

Years	1	2	3	4	5
<u>S/TIP</u> (State/Transportation Improvement Program) <u>This is a *program,* not a plan!</u>					
	“PE1” – Preliminary Engineering (~60%) and Environmental Review		“PE2” – Final Design	Construction	
	<i>What’s involved?</i> Defining an <b>infrastructure</b> project that has previously been identified  Alternatives evaluations, including cost effectiveness  Environmental review & clearance (CE – 6 months; EA - 18 months to 2 years; EIS – 4 to 6 years or longer)  Getting funding in order  Design-level cost estimates  Consultant Procurement (develop, advertise, process, negotiate, and execute contract)		<i>What’s involved?</i> Project design to 100%, including bid documents  ROW acquisition can take anywhere from 18-months to over 6 years (if by eminent domain)  Clearing Permits  Utility agreements  Bid-level cost estimates	<i>What’s involved?</i> Advertise, bid, award, issue notice-to-proceed  Construction contract time set in contract documents  Post-construction activities  Construction closeout	
	Environmental Decision		Construction Begins		

# Tell Me About Those Strings...

Hawaii Division Office

Holet Sea Arch in Shadow

- Period of Performance
- Environmental Clearances
  - HEPA ≠ NEPA
  - NEPA & Section 106 Clearances/Permitting
    - Bugs & bunnies
    - The built environment
    - Historic & cultural resources
- Procurement
  - Brooks Act



# Tell Me About Those Strings...

Hawaii Division Office

Holet Sea Arch in Shadow

- Construction
  - Buy America (iron & steel materials)
  - Davis-Bacon (prevailing wages)
- Administrative requirements
  - Prompt payment
  - Reporting/Documenting EVERYTHING
- Lapsing
  - Federalese for “Use it or lose it”



# Overcoming Hurdles

Hawaii Division Office

Holet Sea Arch in Shadow

- Bundling projects
  - Systemwide plan: A big package of bike projects?
  - Aligning projects: A resurfacing project that includes a bike lane?
- Flexible procurement
  - ID/IQ
- Training!



# Myth or Fact?

Hawaii Division Office

Holet Sea Arch in Shadow

- If you use money for planning, are you obligated to do anything more?
- “You Can’t Use Federal Money in a park”
  - Section 4(f)
  - Trails/sidewalks exempted



# FHWA Resources

Hawaii Division Office

Holet Sea Arch in Shadow

- National Highway Institute Courses
- <https://www.nhi.fhwa.dot.gov>
  - In-person
    - Federal Aid 101
    - Contract Administration
    - NEPA and the Transportation Decisionmaking Process
    - Beyond Compliance: Historic Preservation in Transportation Project Development



# FHWA Resources

Hawaii Division Office

Holet Sea Arch in Shadow

- More NHI in-person trainings:
  - Speed Management
  - Designing for Pedestrian Safety
  - Low-Cost Safety Improvements Workshop
  - Intersection Safety Workshop
  - Bicycle Facility Design
- We can also tailor peer exchanges or technical training for local issues!



# FHWA Resources

Hawaii Division Office

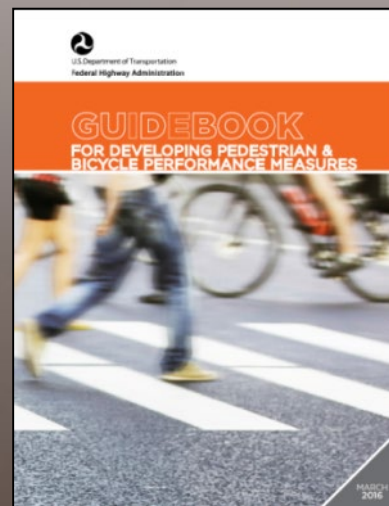
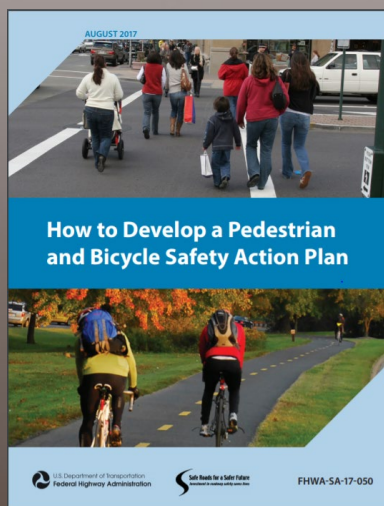
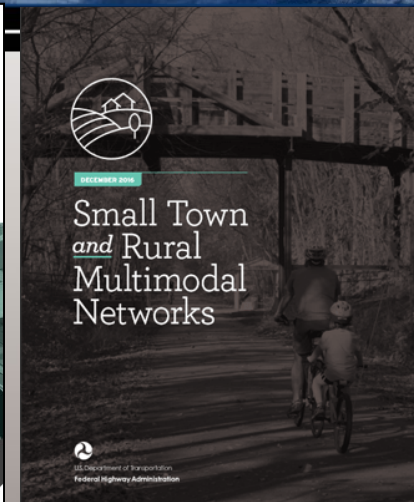
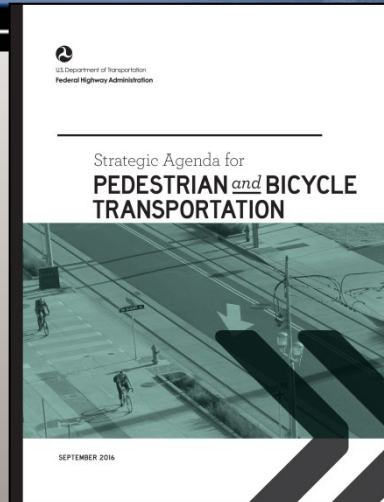
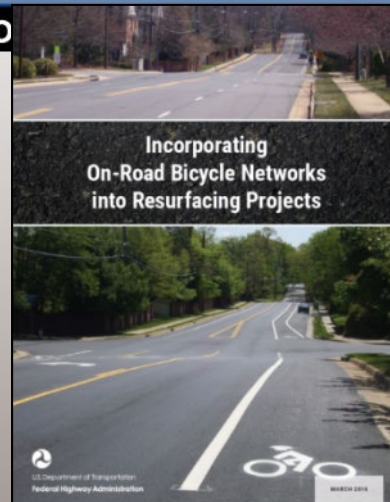
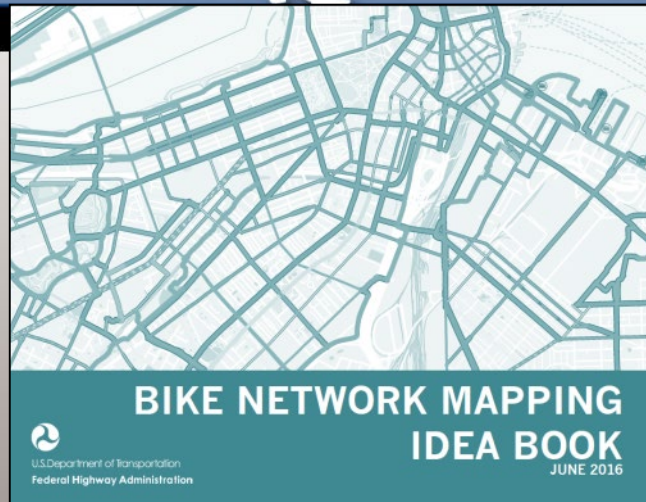
Holet Sea Arch in Shadow

- NHI Web-based Training
  - Introduction to NEPA and Transportation Decisionmaking (FREE!)
  - Fundamentals of Environmental Justice (FREE!)
  - Basics of Public Involvement in Transportation Decision Making (Free!)
  - FHWA Planning and Research Grants: The Uniform Guidance (2 CFR Part 200) - Part 1 & Part 2 (cheap!!)
  - Administrative Record (cheap!)
  - FHWA Planning and Research Grants: Program Administration (23 CFR Part 420) (cheap!)



# Recent FHWA Pedestrian and Bicycle Resources

Holet Sea Arch in Shadow



# “Re-Authorization”

Hawaii Division Office

Holet Sea Arch in Shadow

- Transportation Bill
  - Sets funding formulas by state and program
  - Discretionary funds as well
  - Current bill: FAST Act
    - Enacted on December 4, 2015
    - Expires September 30, 2020
  - New bill in process
    - Senate Environment & Public Works Committee has started on it



# Who is FHWA Hawaii Division?

Hawaii Division Office

Holet Sea Arch in Shadow

- *Oversight & Stewardship of FHWA Funding in Hawaii*

- *Engineering, finance, planning, civil rights, right of way*

- *Bike/Ped Contacts:*

- *Planning: Amy Ford-Wagner*  
[amy.ford-wagner@dot.gov](mailto:amy.ford-wagner@dot.gov)

- *Safety: Wayne Kaneshiro*  
[wayne.kaneshiro@dot.gov](mailto:wayne.kaneshiro@dot.gov)

